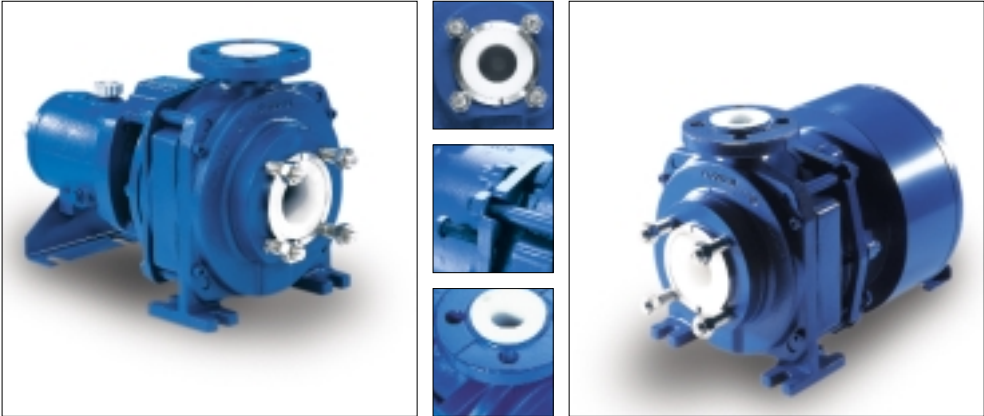


IT'S THE QUALITY INSIDE THAT COUNTS



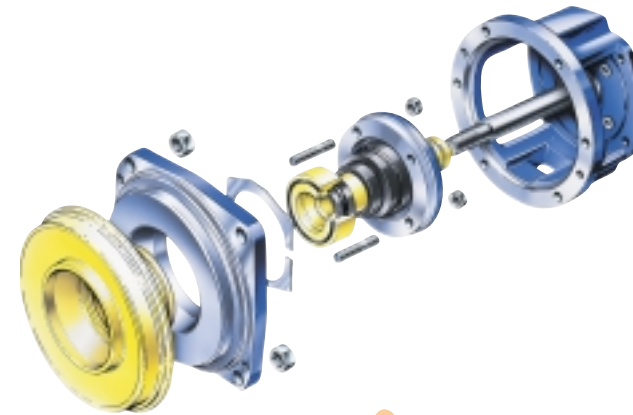
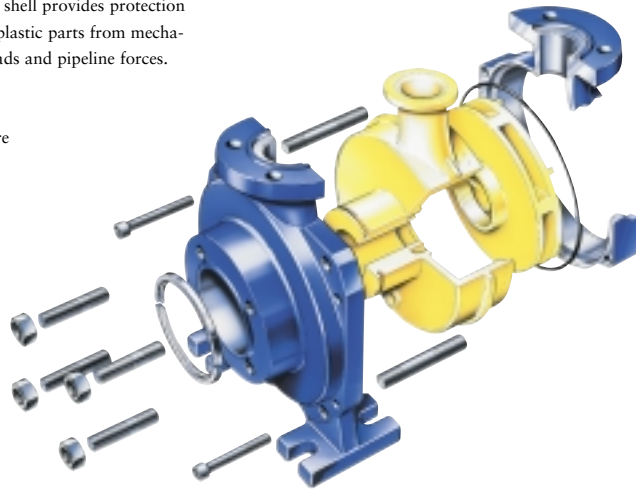
**Protection of all plastic parts.**  
A metal shell provides protection for the plastic parts from mechanical loads and pipeline forces.

All wetted components are made of plastic.

Closed impeller ensures high efficiency and low NPSH values.

Few sealing points thanks to a one-piece plastic liner.

Service-friendly thanks to process-type design and easy on-site replacement of plastic liner.



Long service life even with solids-laden fluids. Optimised hydraulic design of pump casing.

**Long mechanical seal life.**  
Optimum lubrication with the medium handled and improved heat removal due to the conical seal chamber design; the rugged, tried and tested long-coupled design with rigid shaft contributes to this effect.



# T y a c h e m

## Ideal for demanding fluids

Handling aggressive, corrosive and abrasive media is an extremely demanding job for a pump. With the Tychem and Tyamagno series, KSB offers special pump solutions that comply with EN 22 858, ISO 2858 and ISO 5199 and are suitable for applications in the chemical industry, in the process engineering sector and general industry.

## What counts is what's inside

Tychem and Tyamagno, the standardised chemical industry pumps in process-type design, are particularly resistant to chemicals and very hard wearing. Plastic liners of either PE-UHMW, PVDF or PFA and the nodular cast iron shells (GGG 40.3) ensure that these pumps cope so well.

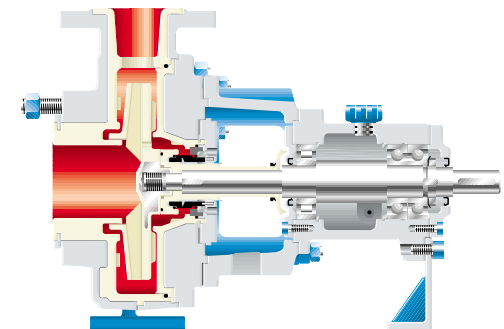
Another advantage of plastic-lined pumps: Where the service life of metal materials is too short or their use is too costly, Tychem with mechanical seal and Tyamagno with magnetic drive operate reliably and safely – both for humans and the environment.

## Technical data

DN:	25 - 100
Q:	up to 300 m <sup>3</sup> /h
H:	up to 95 m
t:	-40 to +150 °C
p:	up to 16 bar

Tychem is also supplied in close-coupled design (DN 25 - DN 50).

Single-acting or double-acting mechanical seals are available for this pump type.



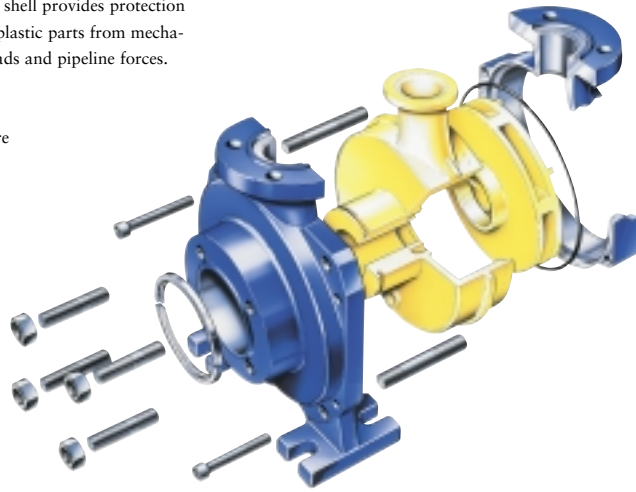
**Protection of all plastic parts.**  
A metal shell provides protection for the plastic parts from mechanical loads and pipeline forces.

All wetted components are made of plastic.

Closed impeller ensures high efficiency and low NPSH values.

Few sealing points thanks to a one-piece plastic liner.

Service-friendly thanks to process-type design and easy on-site replacement of plastic liner.

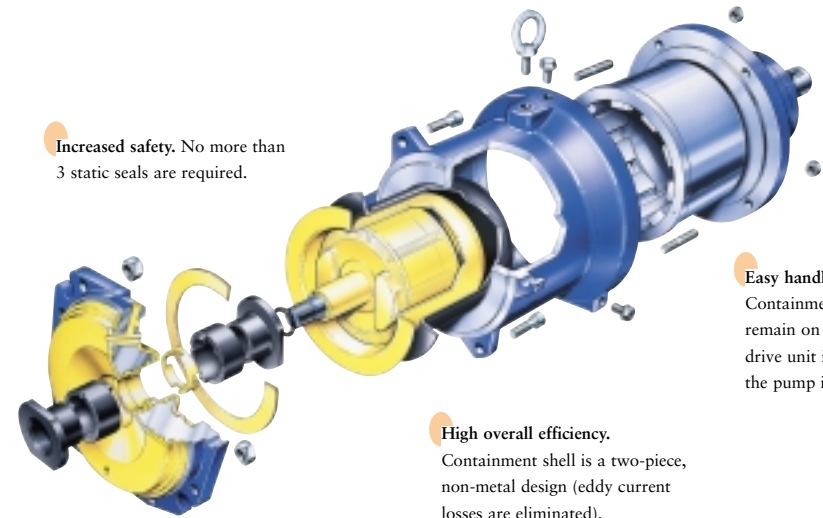


Increased safety. No more than 3 static seals are required.

Easy handling.  
Containment shell and motor stool remain on the casing when the drive unit is dismantled. Draining the pump is not necessary.

High overall efficiency.  
Containment shell is a two-piece, non-metal design (eddy current losses are eliminated).

Long service life of plain bearings (rotor) thanks to the use of silicon carbide and the lubrication by the fluid handled.



# T y a m a g n o

## Ideal for demanding fluids

Handling aggressive, corrosive and abrasive media is an extremely demanding job for a pump. With the Tyachem and Tyamagno series, KSB offers special pump solutions that comply with EN 22 858, ISO 2858 and ISO 5199 and are suitable for applications in the chemical industry, in the process engineering sector and general industry.

## What counts is what's inside

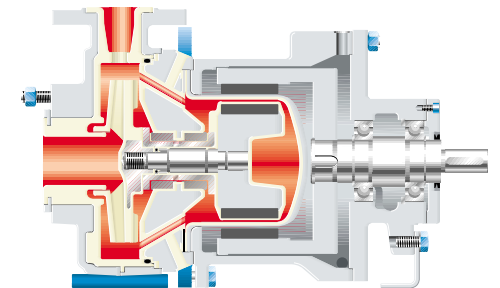
Tyachem and Tyamagno, the standardised chemical industry pumps in process-type design, are particularly resistant to chemicals and very hard wearing. Plastic liners of either PE-UHMW, PVDF or PFA and the nodular cast iron shells (GGG 40.3) ensure that these pumps cope so well.

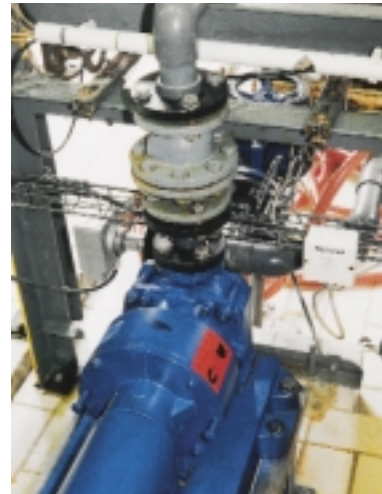
Another advantage of plastic-lined pumps: Where the service life of metal materials is too short or their use is too costly, Tyachem with mechanical seal and Tyamagno with magnetic drive operate reliably and safely – both for humans and the environment.

## Technical data

DN: 32 - 80  
Q: up to 230 m<sup>3</sup>/h  
H: up to 95 m  
t: -40 to +150 °C  
p: up to 16 bar

Tyamagno is also available in close-coupled design (DN 32 - DN 50).



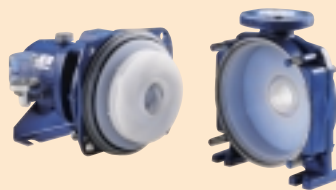


## Always the right solution

No matter what the application, KSB has got the right pump on offer, even when it comes to handling aggressive, corrosive and abrasive fluids. The complete KSB product range comprises metal pumps and plastic-lined standardised chemical industry pumps such as the Tyachem and Tyamagno series.

## A design well thought out

The beauty of the process-type designed Tyachem and Tyamagno series is that both for maintenance and possible repair work the pump can remain in the piping. The liner can be replaced locally without any special tools. And the metal shell ensures that the plastic parts are protected against pipeline forces and other mechanical loads.



## Covering all

KSB's innovative pump technology is also evident in areas such as environmental protection and spare parts stockkeeping. For one thing, Tyachem and Tyamagno can be recycled in accordance with current environmental protection regulations as both metal and plastic parts can be properly separated. And for another, it is possible to considerably reduce the number of spare parts to be stocked thanks to the KSB modular design system and the use of components of other KSB pump series, for instance the CPK bearing bracket.