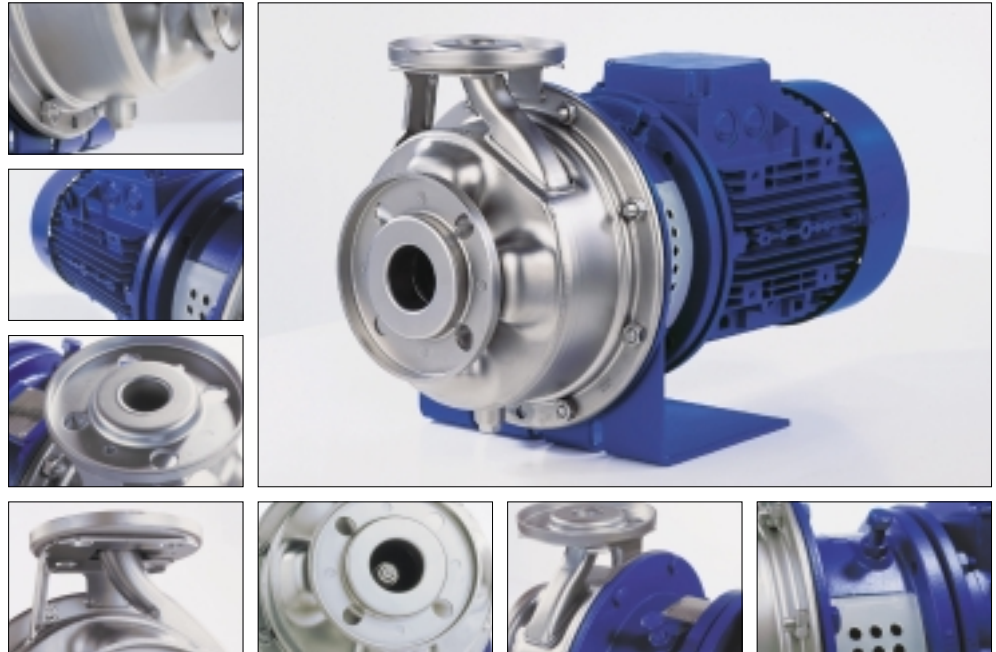


# A MULTITALENT



# Etachrom<sup>®</sup> C

## Sophisticated

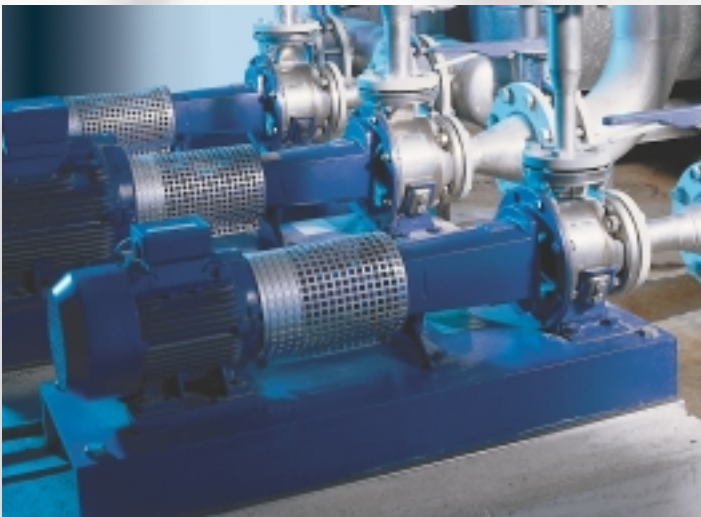
Providing the right pump for each medium. This is a requirement KSB can easily meet with its comprehensive range of products. And just like its predecessors, KSB's new generation of Etachrom<sup>®</sup> C stainless steel pumps boast versatility and flexibility. The multitalents are meaningful complements to the cast-iron models made by KSB – efficient and reliable.

## Universal

Etachrom<sup>®</sup> C is not only used for handling drinking water, seawater, industrial water, swimming pool water as well as acids and alkalines. It can also cope with pumping duties in the field of water treatment, filtering applications, HVAC and fire-fighting systems. The multi-media pump produced on a large scale is standardised to EN 733 and available with bearing bracket (NC) as well as in close-coupled design (BC).

## High-quality

High-grade material is needed to help the pump cope with as many media as possible and to ensure corrosion resistance. With its Etachrom<sup>®</sup> C made of deep-drawn chrome nickel molybdenum steel (1.4571/316Ti) KSB has a noble pump on offer which is suitable for an extended application spectrum. And there are other advantages a high-quality material will offer: Its smooth surface and refined flow geometry make for optimised efficiency and minimised cavitation erosion. This results in reduced operating costs and increased service life.



**Back pull-out design:** easy to dismantle;  
pump casing remains in the piping

**Material:** high-grade chrome nickel  
molybdenum steel (1.4571)

**Excellent efficiency** makes for maxi-  
mum profitability



**Inlet geometry** designed for maxi-  
mum suction capacity and opti-  
mum cavitation behaviour

**Versatile:** can handle drinking water,  
for example, as well as acids and  
alkalines



### **Technical data** **Etachrom® C**

DN	25 - 80
Q	up to 260 m <sup>3</sup> /h, (72 l/s)
H	up to 108 m
t	-30 to +110 °C
Pd	up to 12 bar